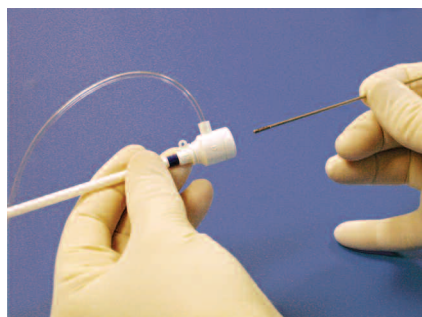


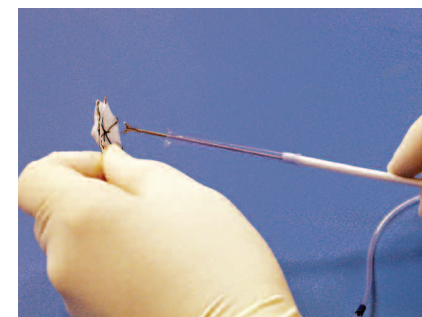
ATRIASEPT™ Device Loading Instructions



Step 1)
Place clear introducer over loading sheath.



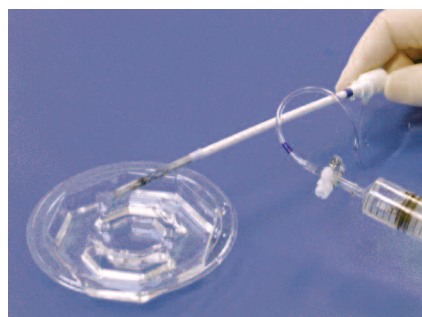
Step 2)
Push forceps through loading sheath and clear introducer.



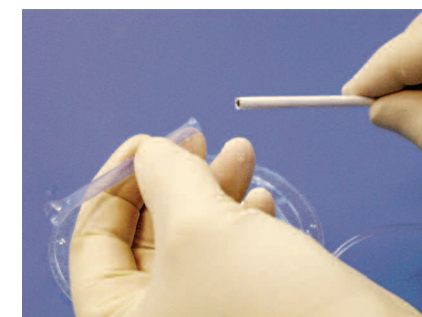
Step 3)
Grasp pin on ATRIASEPT. Tighten locking ring on forceps to secure device. Ensure device rotates freely on forceps.



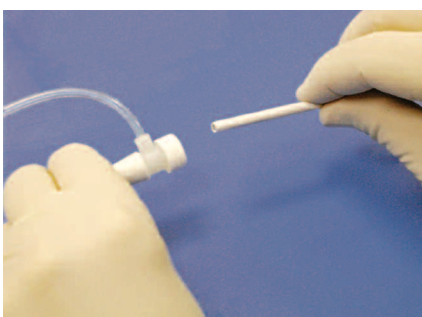
Step 4)
Using a syringe, flush device to remove all air bubbles while simultaneously pulling device back into loading sheath.



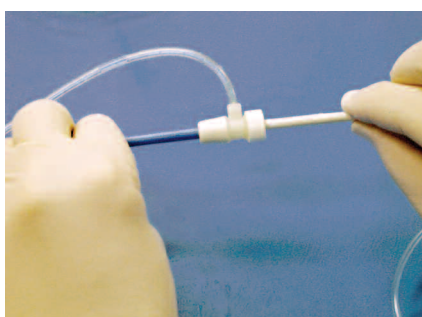
Step 5)
While continuing to flush, pull back on forceps so entire device is in the loading sheath.



Step 6)
Once device is fully in loading sheath, remove clear introducer.



Step 7)
Continue to flush while pushing 12F loading sheath into hemostasis valve of a 9-12F Mullins Sheath.



Step 8)
Continue to push the loading sheath firmly into the hemostasis valve of the Mullins until it stops.



Step 9)
Continue to flush device. Advance ATRIASEPT from loading sheath through hemostasis valve and into Mullins Sheath.

