



ultrasept

Advancing Septal Closure Technology

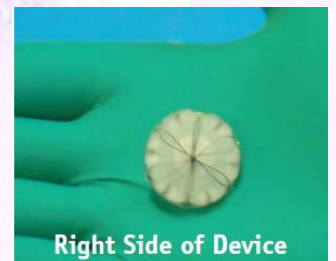
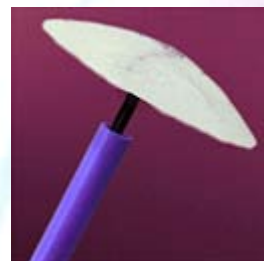
ultrasept Cribriform Multi-fenestrated ASD Closure System

- Dual circular design
- Super low profile
- Designed for the closure of fenestrated ASD's
- Right side retrievable
- Repositionable within the defect

ultrasept Cribriform device has been developed for the transvenous closure of a multifenestrated septum.

The double round discs allow for easy deployment of the device as well as a super low profile.

The patented technology of the *ultrasept* allows for optimal positioning and repositioning of the device within the defect.

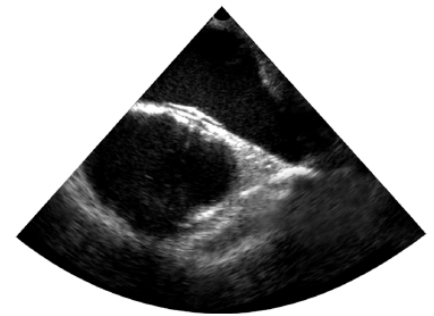


cardia

CE 0473

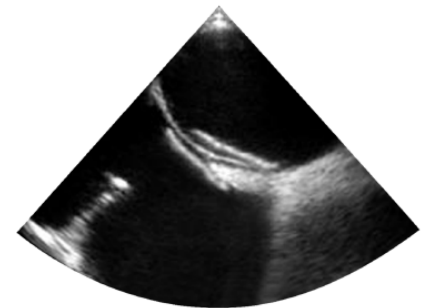
ultrasept Cribriform Device

Product Code	LA - RA Diameter	Delivery Sheath
SO-05-2525	25mm	10F
SO-05-3030	30mm	11F
SO-05-3535	35mm	12F



cardia Delivery System

Product Code	Description	Sheath
AC-10-1801	10F Standard Kit	80 cm length with ASD curve
AC-11-1801	11F Standard Kit	80 cm length with ASD curve
AC-12-1801	12F Standard Kit	80 cm length with ASD curve
AC-13-1801	13F Standard Kit	80 cm length with ASD curve



For More Information Contact:

Cardia Inc.
2900 Lone Oak Parkway, Suite 130
Eagan, MN 55121 USA
•Phone: +1-651-691-4100
•Fax: +1-651-994-9500
•Website: www.cardia.com

Cardia Europe n.v.
Martelaarslaan 408
9000 Gent
Belgium

mkt.br.2011.05.10
for U.S. export only