

**INITIAL EXPERIENCE WITH THE ATRIASEPT:**  
**A New Device For Transcatheter Closure Of Secundum Atrial Septal Defect.**

*Our thanks to:*  
 Dr. Christiani and Dr. Bergman.  
 Pediatric Cardiology Department.  
 Hospital Balbino, Rio de Janeiro, Brazil.

**ATRIASEPT™**

*Advancing Septal Closure Technology*

**BACKGROUND**

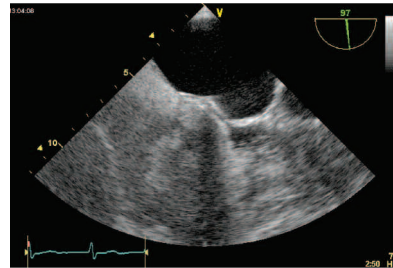
The ATRIASEPT (Cardia, Eagan, MN) is a low profile, self-centering, fully retrievable, and repositionable double-umbrella device with a woven Nitinol frame and polyvinyl alcohol sails. It can be used for transcatheter closure of moderate-size secundum atrial septal defects (ASD) up to approximately 24 mm in stretched diameter. The diameter of the inner self-centering ring is designed to closely match the stretched diameter of the ASD, and the total arm length is 14 mm longer than the centering ring diameter. Device endothelialization is excellent.

A 10 year old patient with right ventricular overload was referred to our cardiology department for the closure of a secundum Type II ASD. General anesthesia was performed along with TEE. The TEE control showed an ASD with good posterior and aortic rims. A sizing balloon was used to measure the ASD. Balloon sizing showed the defect at approximately 10mm.

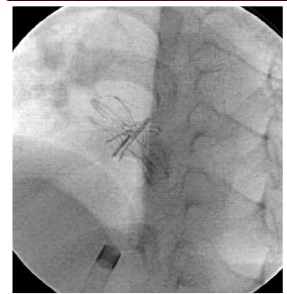
QP/QS was 1.7

An Atrisept SO-10 device, (Cardia, Eagan, MN , USA) was positioned without any problem.

TEE control showed an excellent position of the device. A bubble study showed no residual shunt.



Echo Post Release



ATRIASEPT™ released from delivery cable, lateral fluoroscopy

**ASD Device**

Order Number	Centering Mechanism	Outside Disc Diameter	Delivery Catheter	Introducer
SO-08	8mm	22mm	10F	12F
SO-10	10mm	24mm	10F	12F
SO-12	12mm	26mm	10F	12F
SO-14	14mm	28mm	10F	12F
SO-16	16mm	30mm	11F	12F
SO-18	18mm	32mm	11F	12F
SO-20	20mm	34mm	11F	12F
SO-22	22mm	36mm	12F	12F
SO-24	24mm	38mm	12F	12F
SO-26	26mm	40mm	12F	12F
SO-28	28mm	42mm	13F	13F
SO-30	30mm	44mm	13F	13F
SO-32	32mm	46mm	13F	13F

CARDIA®

# ATRIASEPT™

*Advancing Septal Closure Technology*

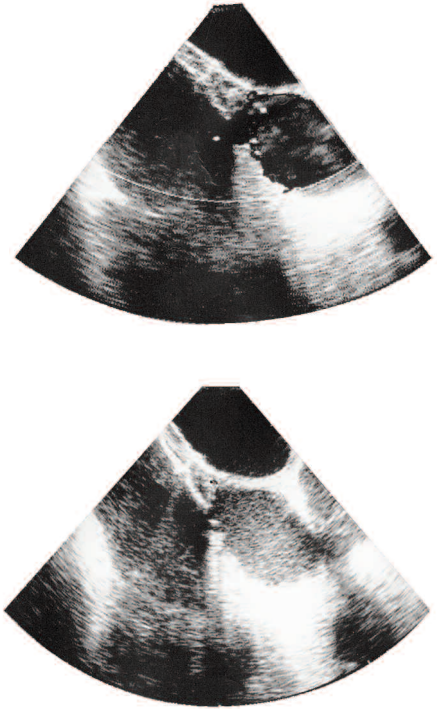
ATRIASEPT™ ASD Device has been developed for the transvenous closure of Atrial Septal Defects. The dual articulating sails along with the patented centering mechanism allows for **easy deployment** of the device as well as a **super low profile** within the atria.

The patented **self-centering mechanism** is incorporated into the device for optimal **positioning and repositioning** of the device within the defect. An integral locking delivery and retrieval mechanism ensures safe and stable deployments.

ATRIASEPT™ is **fully retrievable** before and after release.

---

ATRIASEPT™ is available in even sizes with a centering mechanism of 8-32mm.



*For More Information Contact:*

CARDIA® Inc.

2900 Lone Oak Parkway, Eagan, MN 55121 USA

Phone +1-651-691-4100 • Fax +1-651-994-9500

Email: [Cardia@Cardia.com](mailto:Cardia@Cardia.com) Website: [www.Cardia.com](http://www.Cardia.com)

CARDIA® Europe

Burggravenlaan 351

9000 Gent

Belgium

CE 0473